



#### WHAT IS IT?

Hosted, multi-tenant (shared) infrastructure including storage, compute, and hypervisor.

#### WHAT YOU GET:

- Pool of resources
- Purchase by the GB of RAM & GHz of CPU

#### USE CASES:

- Mission critical applications and general workloads.
- Small databases and large relational databases.
- Web and mobile applications and servers.
- Batch processing and media streaming.
- Disaster recovery and data protection use cases.

iland Secure Public Cloud



#### WHAT IS IT?

Hosted, single-tenant (dedicated) infrastructure including storage, compute, and hypervisor.

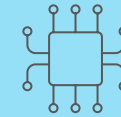
#### WHAT YOU GET:

- Dedicated servers, purchased in blocks
- Built in N+1 model

#### USE CASES:

- Mission critical workloads with demanding performance/RAM or CPU-based pricing and licensing requirements.
- Applications with specific regulatory, compliance, and data sovereignty needs.
- Applications that require extensive customization across several criteria.
- High performance and security disaster recovery and data protection use cases.

iland Hosted Private Cloud



#### WHAT IS IT?

Hosted, single-tenant (dedicated) infrastructure including storage, compute. No hypervisor.

#### WHAT YOU GET:

- Dedicated bare metal servers for running any OS or hypervisor

#### USE CASES:

- Highest customization for IOPS, GPU model, or a unique RAM-to-CPU ratio or RAID level
- Built to the unique specifications required by your application.
- Minimal overhead on performance (i.e. no virtualization) for performance tuning, etc.
- Full hardware control for specific storage, networking, etc.

iland Bare-Metal Cloud

- Proven, VMware-based technology
- Built-in security and dedicated compliance team
- Fully-integrated, unified management across public and private clouds via iland Secure Cloud Console

- Included backup and integrated disaster recovery
- All-inclusive pricing
- Included 24x7 support and available onboarding services

All iland Secure Clouds



Protect business.  
Power innovation.